

EZ Drive Boot Function

You can boot up the system with EZ Drive in **HDD** state. (*1)

(Motherboard must support **USB-ZIP** as a boot up device)

*1: Boot Function is Motherboard dependent. Some Motherboard will not work well.

Method 1: Windows 98 / 98 SE – Windows Mode (*2)

(1) Open “My Computer”

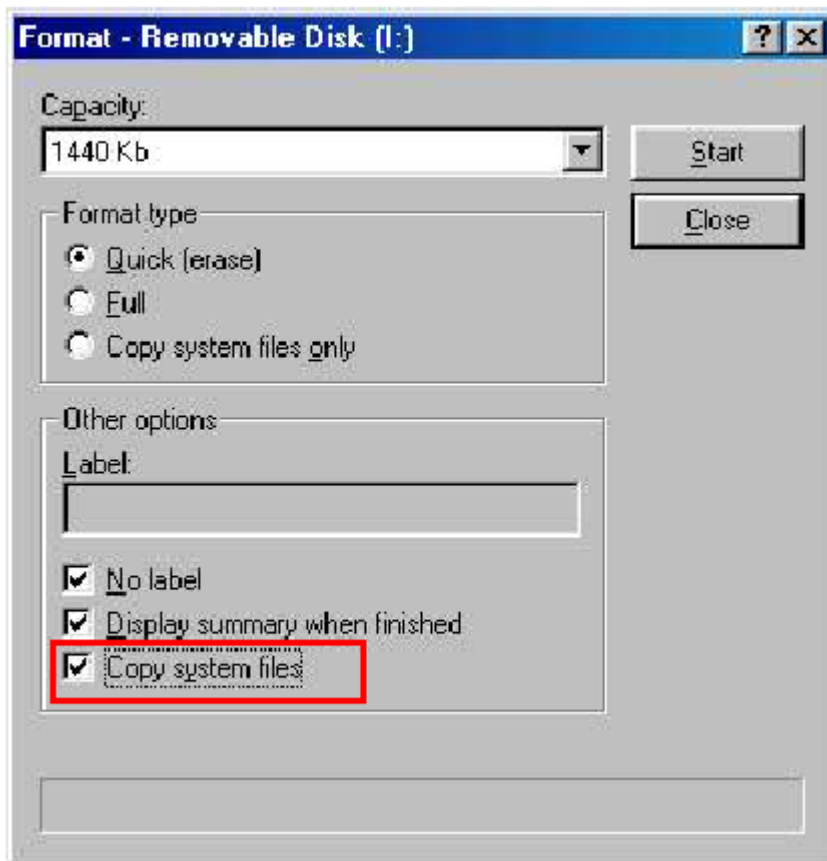
(2) Find the drive letter that represents the EZ Drive

(3) Right click the mouse bottom on the drive letter and select format

(4) Tick “Copy system files” to copy boot files

(5) Click “Start” to begin

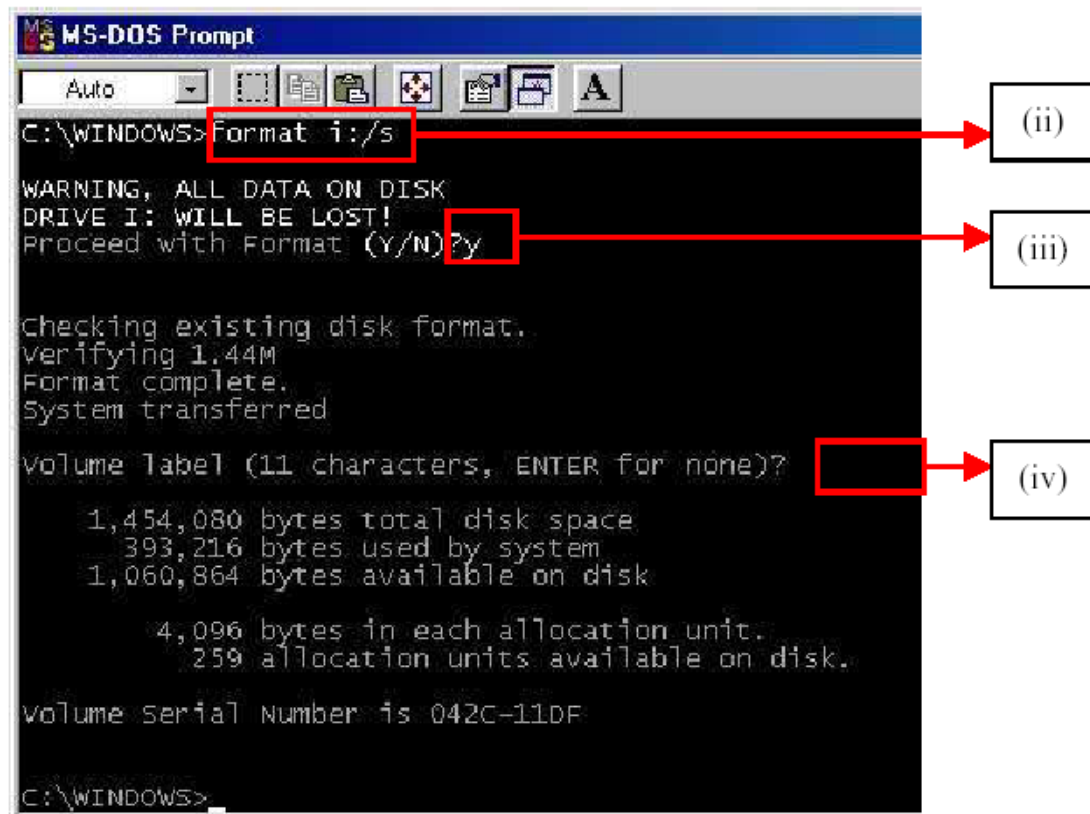
(6) Reboot the computer and set **USB-ZIP** as the first boot up device in BIOS.



*2: You must install the Windows 98 driver of EZ Drive at the first.

Method 2: Windows 98 / 98 SE – DOS Mode (*2)

- (1) Go to “DOS Mode” from Windows
- (2) Type “format x: /s” (Where x represent the drive letter of the EZ Drive)
- (3) Type “y” to proceed
- (4) Enter volume label
- (5) Reboot the computer and set **USB-ZIP** as the first boot up device in BIOS.



*2: You must install the Windows 98 driver of EZ Drive at the first.